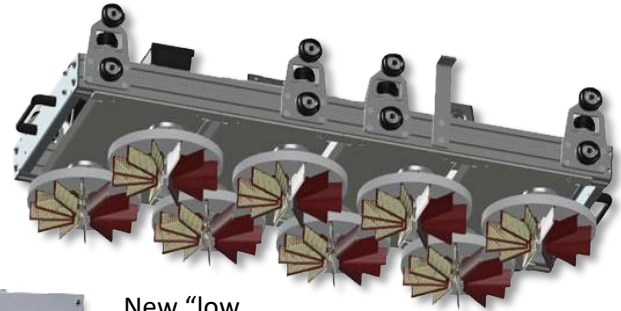


Cup Brush

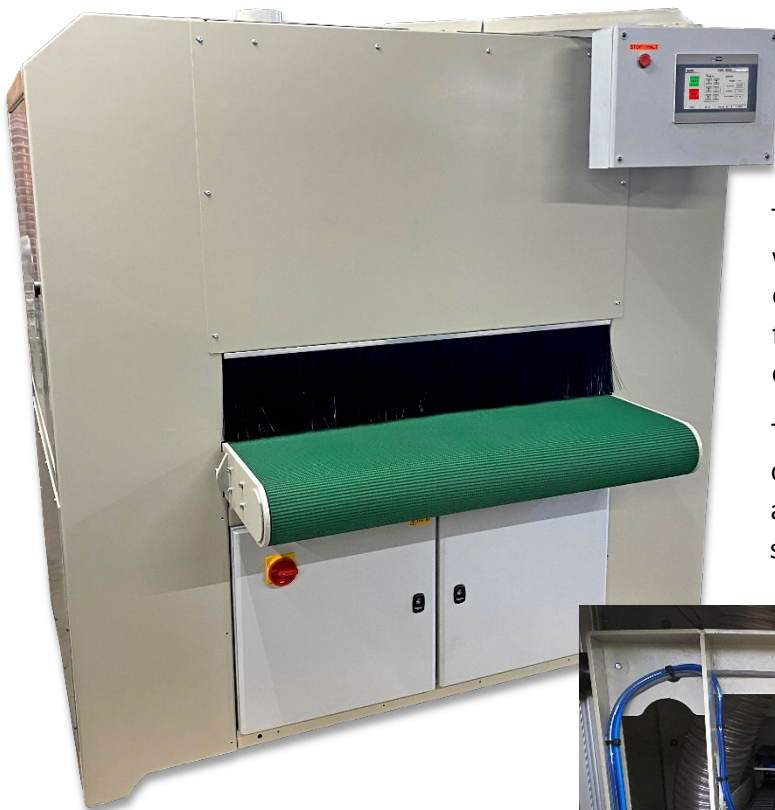
Sealer Sander



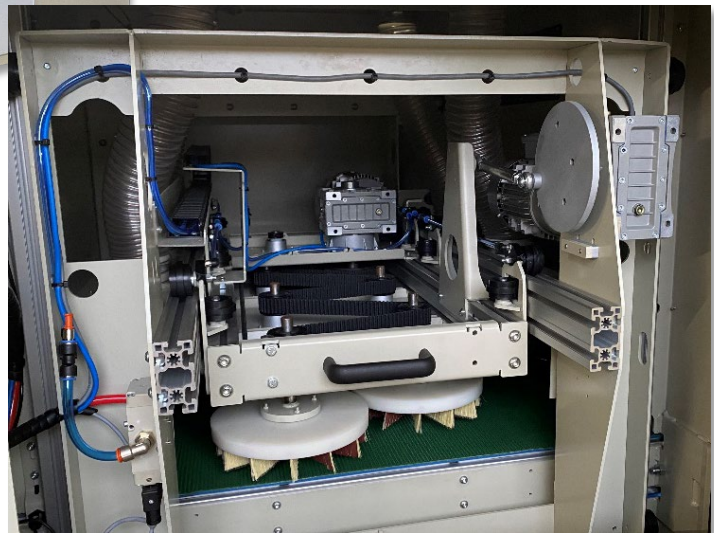
New “low cost” solution to sanding and sealer sanding of flat and profiled panels up to 1.9m wide.

The Cup Brush Sealer Sander is fitted with rotating cup brushes, which oscillate from side to side. The machine features a strong, robust design with easy access to the sanding heads.

There is full electronic variable speed control of the brushes, head oscillation and conveyor speed, allowing you to switch between sanding and sealer



sanding without changing the abrasive. Simply change the speed and RPM settings on the in-built PLC, which holds up to 6 different programs.

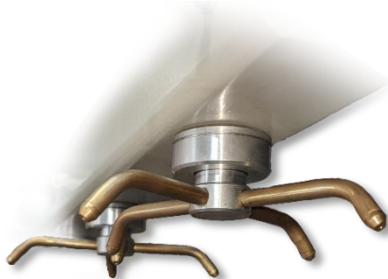
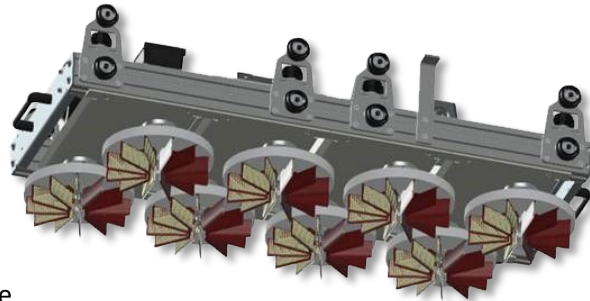


Ideal for sanding kitchen cabinet doors, window frames, furniture, wood profiles and much, much more!

Superior Sanding Results

The Cup Brush Sealer Sander's impressive size and robust construction show its ability to perform both the most delicate of sealer-sanding and general sanding tasks.

The front brush heads rotate clockwise, while the rear set rotate anti-clockwise, gently removing fibres and paint nibs, while the whole head carriage oscillates back and forth across the material, ensuring the Cup Brush Sealer Sander produces consistent, even results every time.



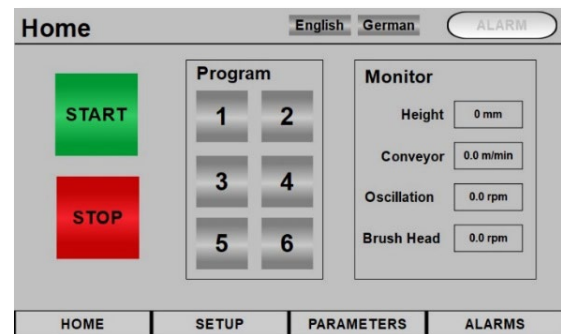
Thanks to the roto air-jets at the rear of the Cup Brush Sealer Sander, sanded material comes out of the conveyor free of dust and debris, ready for spraying.

Activated by sensors on the in-feed of the conveyor belt, they spin at high speed, providing cleaning air across the whole panel while it passes through the machine.

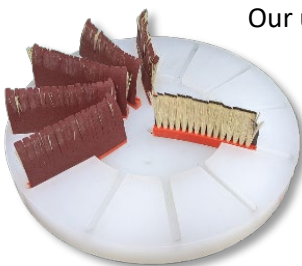
Easy to use

The in-built PLC control makes operating the Cup Brush Sealer Sander effortless. All the parameters are fully adjustable while the Cup Brush Sealer Sander is in operation, allowing you to fine tune your results on the fly.

The PLC can save up to 6 programs, allowing you to save your most frequently used settings.



Easy to maintain



Our unique system of "Cup Brushes" that gives the machine its name, couldn't be simpler to maintain. The oscillating carriage just slides out of either side of the machine for easy access.

The brush heads are held on by one bolt, and the brushes simply slide in and out of the channels in the cup head.

Performance

Min. size panel:	100mm x 100mm
Min. material thickness:	1mm
Max. material thickness:	120mm
Working height:	850mm

Model	Working width	Feed speed	Brush RPM	Oscillation RPM
CB 1000	1000mm	1.5-10m/min	100-700	20-60
CB 1300	1300mm	1.5-10m/min	100-700	20-60
CB 1600	1600mm	1.5-10m/min	100-700	20-60
CB 1900	1900mm	1.5-10m/min	100-700	20-60

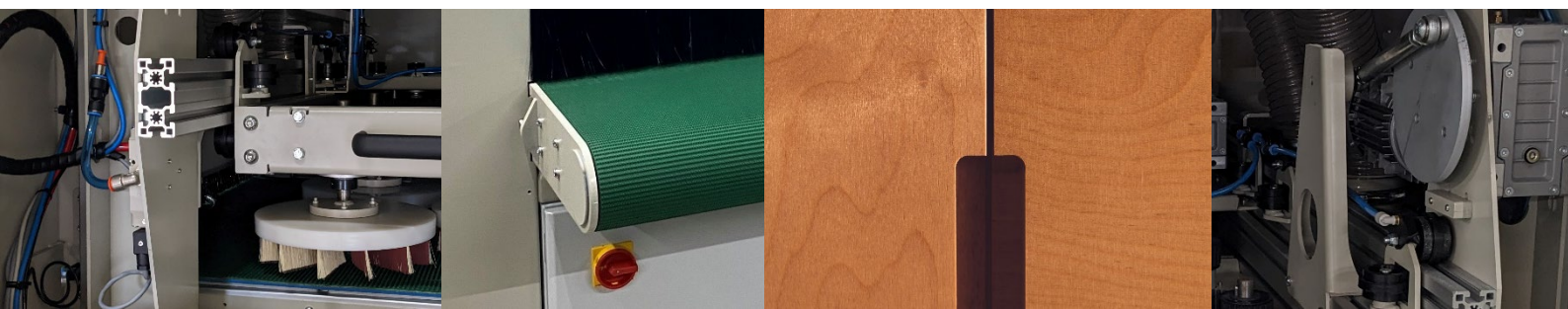
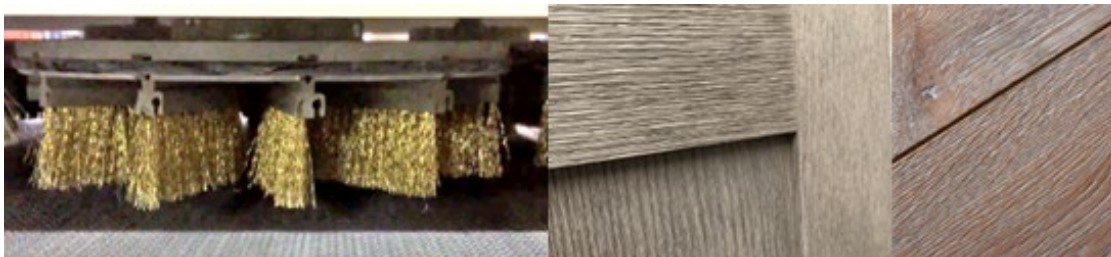
Brush head specification

Diameter:	250mm
------------------	-------

Model	No. of brush heads	Full Loading qty of brush
CB 1000	8	96
CB 1300	10	120
CB 1600	12	144
CB 1900	14	168

Heavy Duty Upgrade

The HD upgrade adds an extra motor on the brush head unit, giving you the extra power to handle the toughest jobs. Coupled with wire brushes, a HD machine is perfect for distressing wood for a rustic look. Thanks to the 360° sanding from Cup Brush system, you can enhance the grain running in multiple directions on a 5-piece door in 1 pass.



Electrical requirements & motors

Voltage:	400/480v, 3 phase, neutral & earth
Frequency:	60Hz
Amps:	20

Model	Main drive motor	Oscillation motor	Raise/lower motor
CB 1000	1.5kW	0.55kW	0.20kW
CB 1300	1.5kW	0.55kW	0.20kW
CB 1600	2 x 1.5kW	0.55kW	0.20kW
CB 1900	2 x 1.5kW	0.55kW	0.20kW

Extraction requirements

Model	No. of dust outlets	Required extraction
CB 1000	4 x 100mm Ø	2500m ³ /hr
CB 1300	4 x 100mm Ø	3500m ³ /hr
CB 1600	6 x 100mm Ø	4500m ³ /hr
CB 1900	8 x 100mm Ø	5500m ³ /hr

Overall machine size

Model	Width	Length	Height
CB 1000	1650mm	1900mm	1525mm
CB 1300	2050mm	1900mm	1525mm
CB 1600	2350mm	1900mm	1525mm
CB 1900	2650mm	1900mm	1525mm

